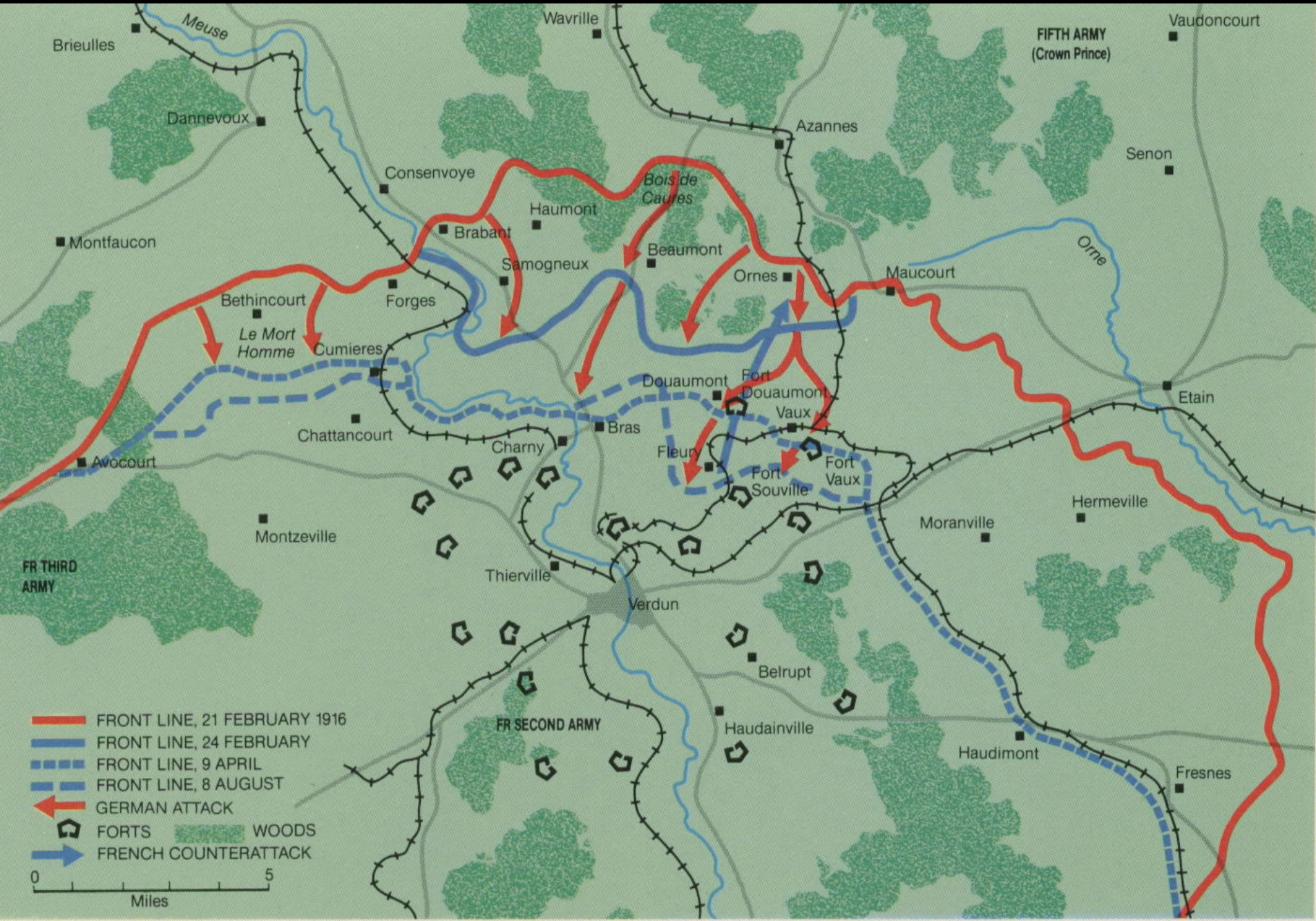


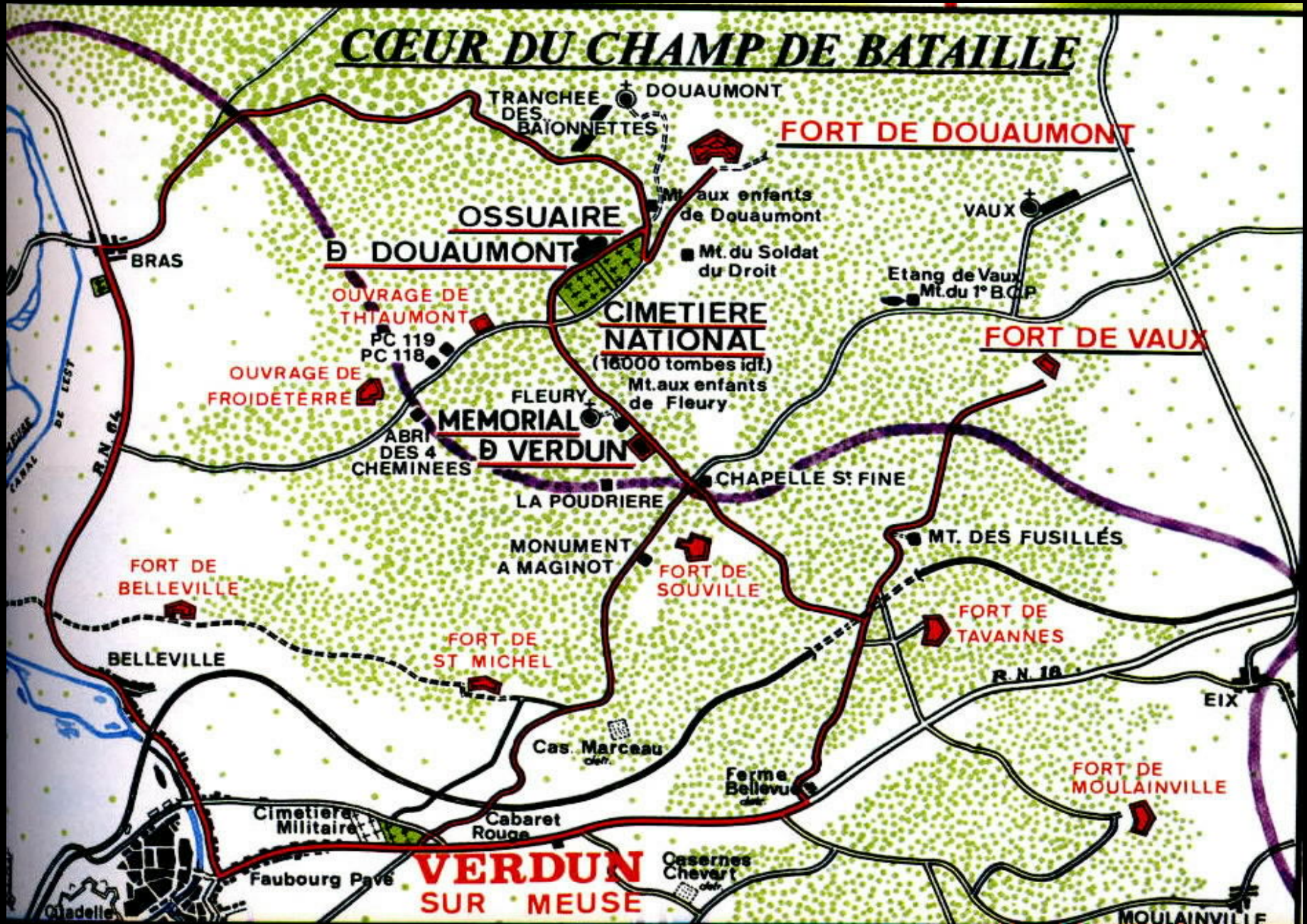
WORLD WAR I

BATTLE OF VERDUN

BATTLE MAP



BATTLE AREA TODAY



BATTLE DESCRIPTION

Verdun *World War I*

February 21, 1916, when General von Falkenhayn launched the 5th Army (1m. men) on a massive offensive against the salient before this city held by the French 2nd Army. Aware that the French for reasons of national pride would fight to the last there, von Falkenhayn planned a war of attrition and launched the offensive with a day-long bombardment heavier than anything before, which obliterated the outer ring of French defences and enabled the Germans to occupy them with little opposition. Owing to the new policy of *attack* many French forts, including Douaumont, had been deliberately left unmanned. This fort fell on February 25. French counter-attacks and accurate artillery fire checked the German advance temporarily, but the village of Vaux fell on March 29 and Fort Vaux on June 6. A desperate German assault on the heights commanding Verdun was repulsed on July 11, after which exhaustion checked them. In six months'

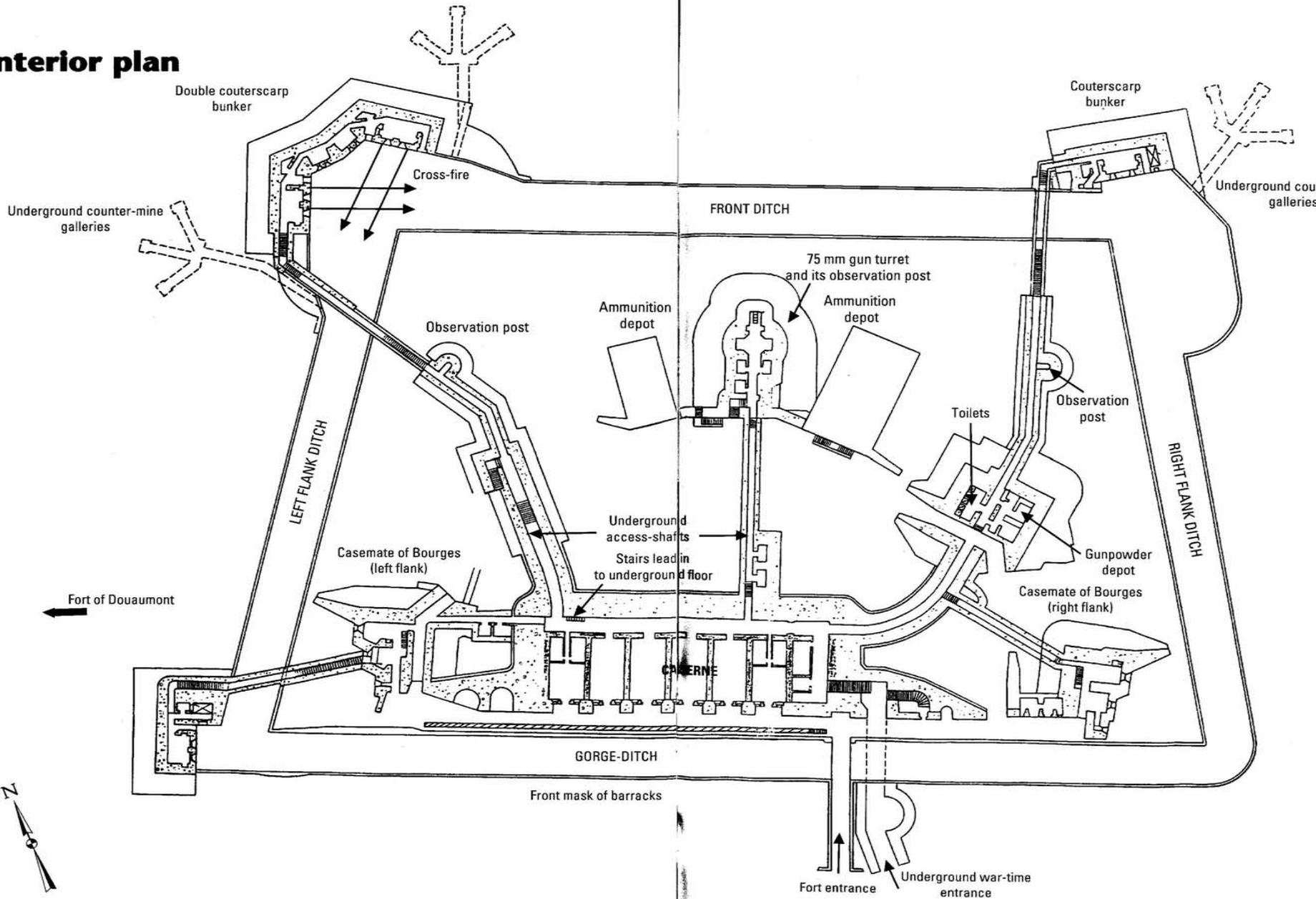
fighting they had failed to take the city and lost 280,000 men, to France's 315,000. After a three-months' build-up the French, under General Nivelle, launched a counter-offensive on October 24, forced back the Germans and retook forts de Vaux and Douaumont by November 2. Another counter-offensive won back more ground. The longest of the war, the battle ended on December 18 in stalemate, with 542,000 French and 434,000 German casualties. *See Somme I.*

MAP OF FORT VAUX

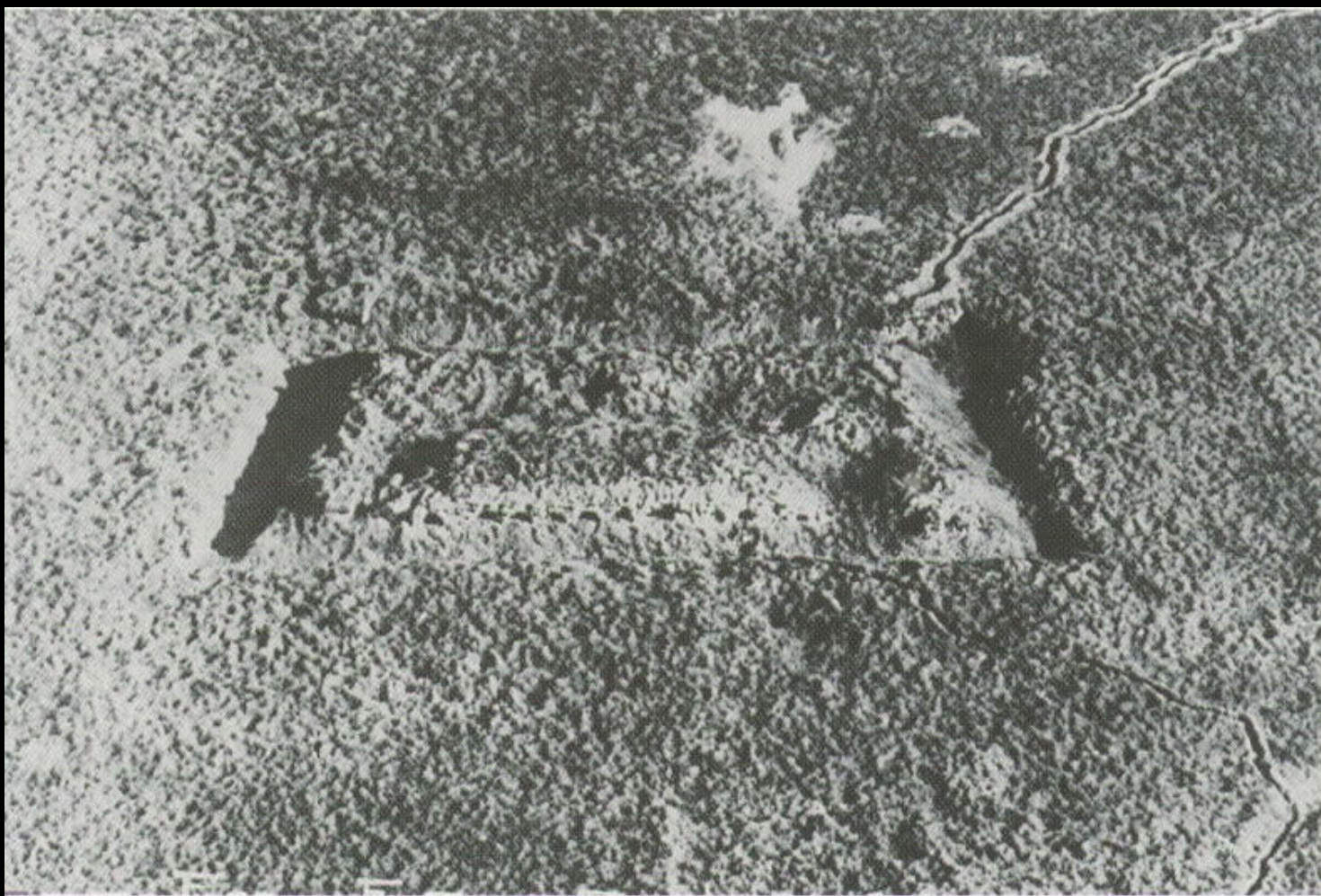
Conditions before 1914

Fort Vaux

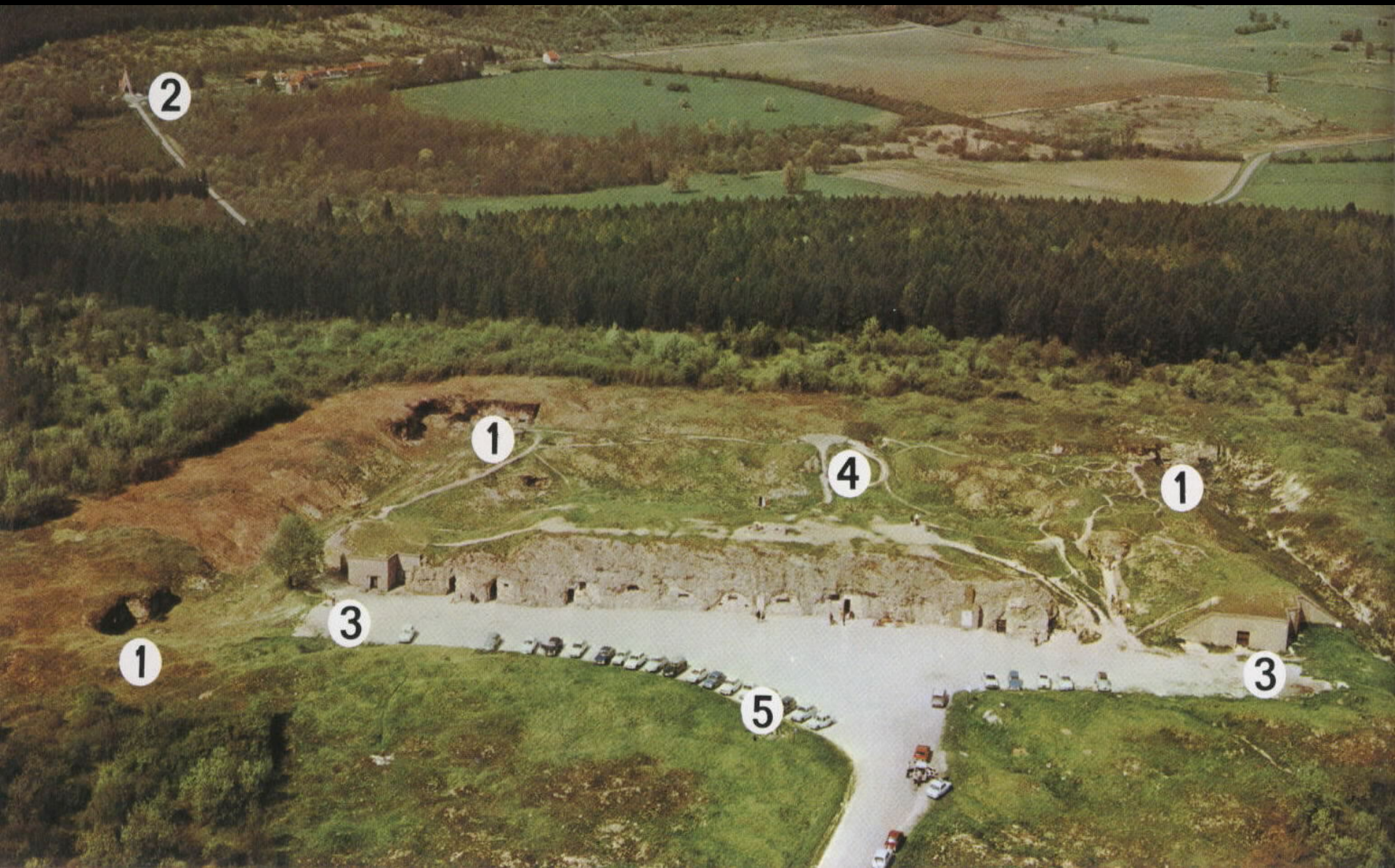
Interior plan



VERDUN FORT VAUX



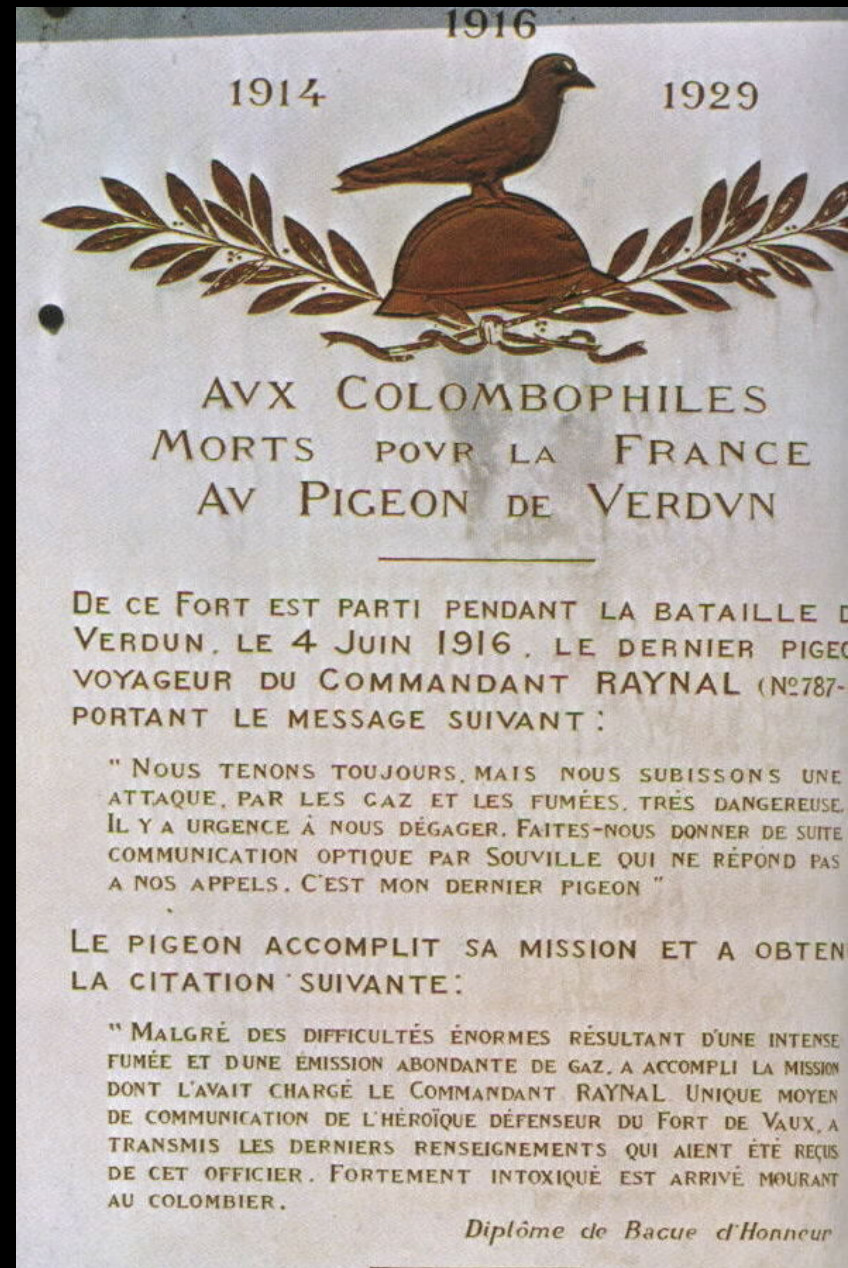
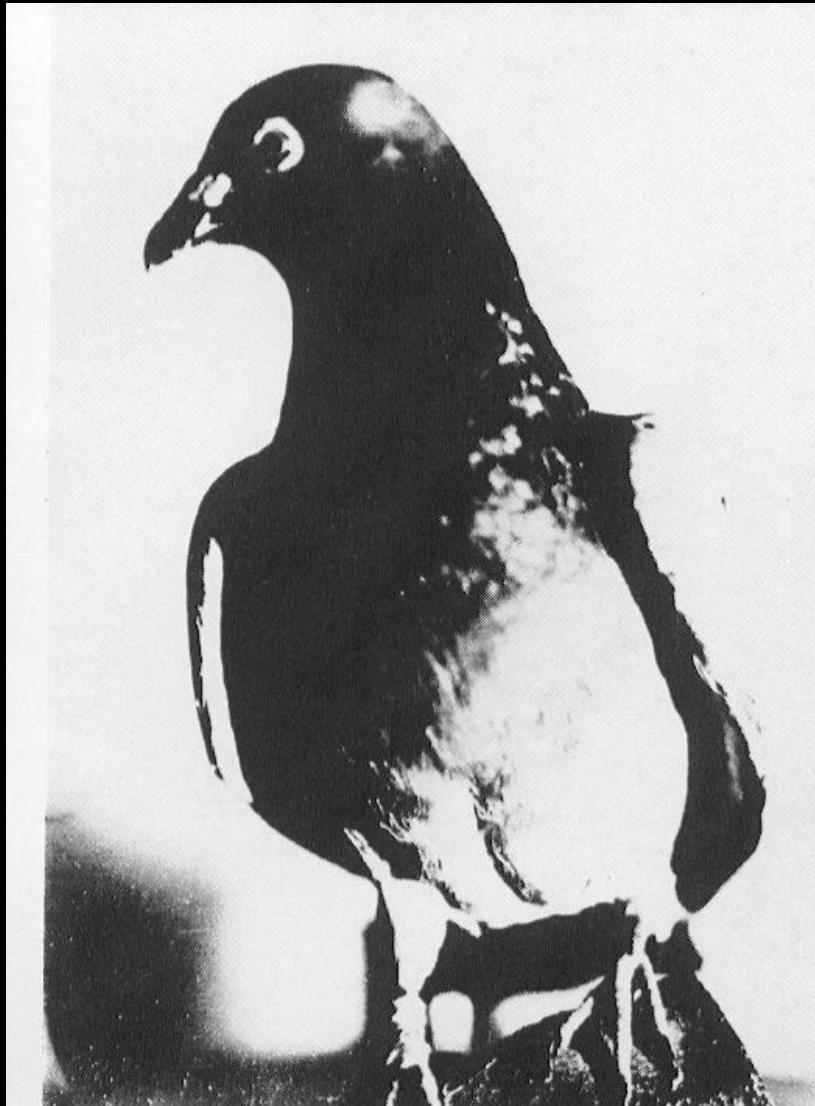
FORT VAUX TODAY



FORT VAUX PIGEON COOP



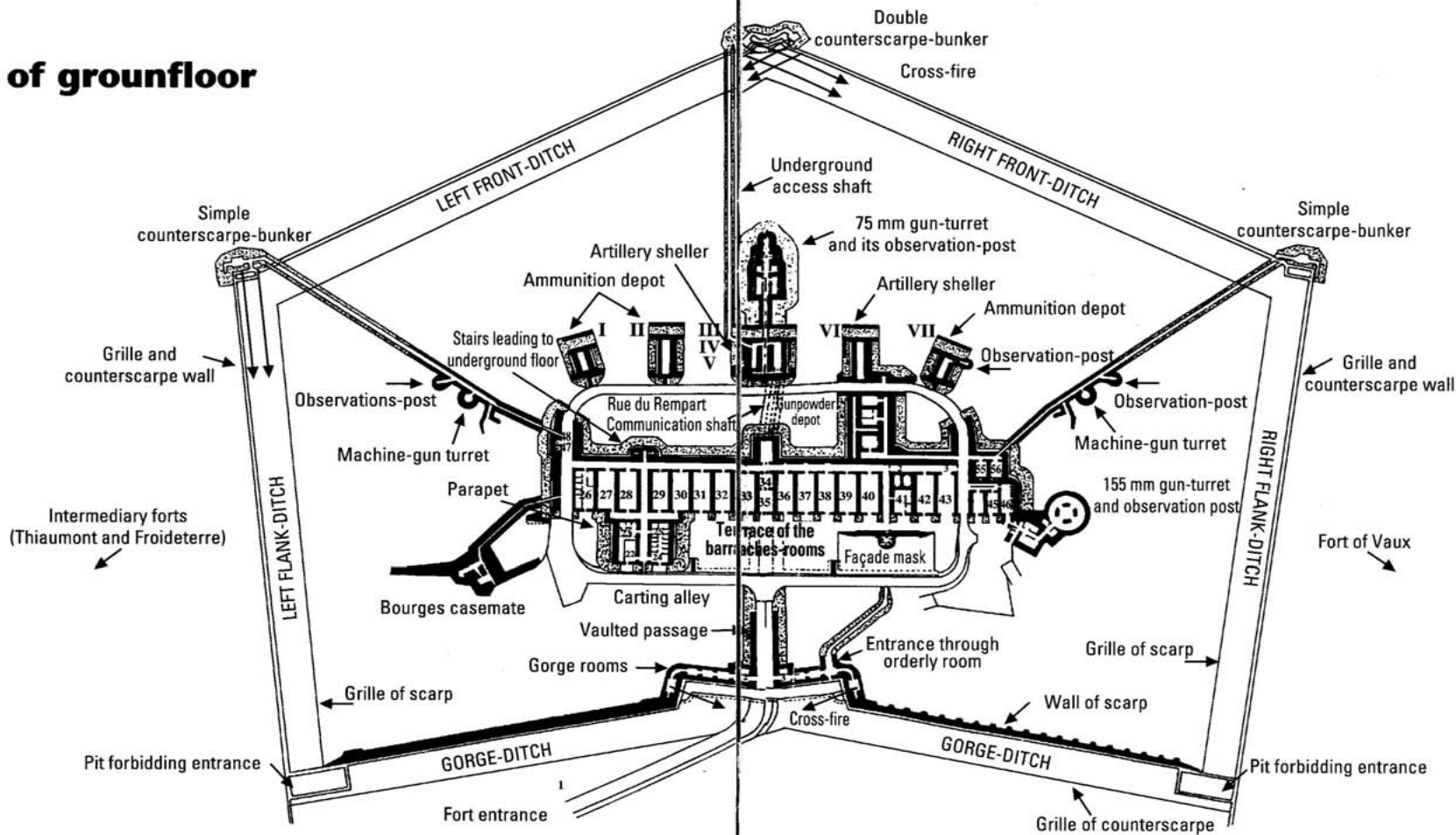
THE LAST MESSENGER



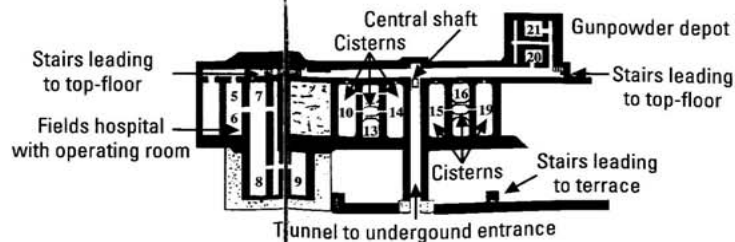
MAP OF FORT DOUAUMONT

Condition before 1914

Plan of groundfloor

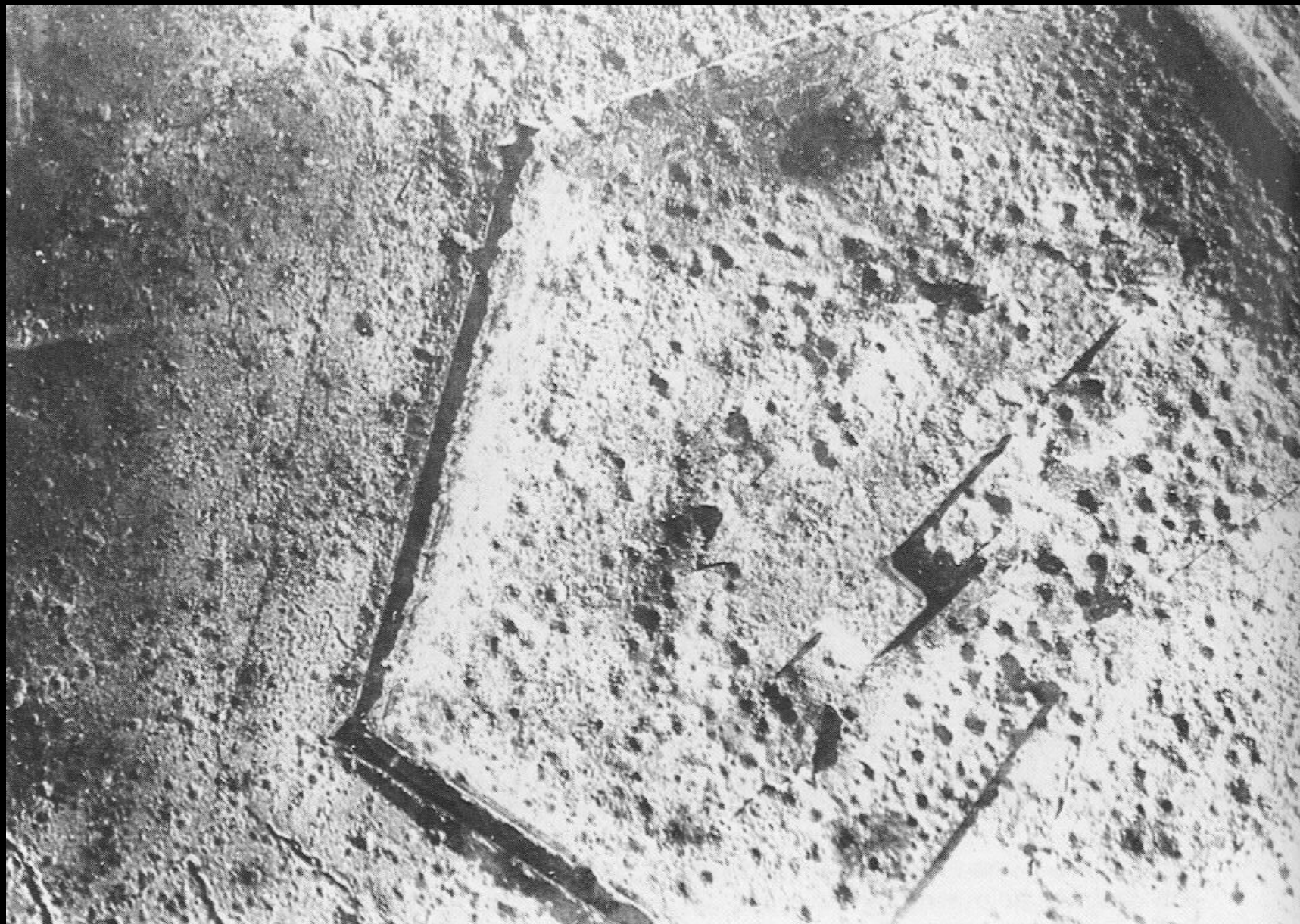


Plan of underground floors

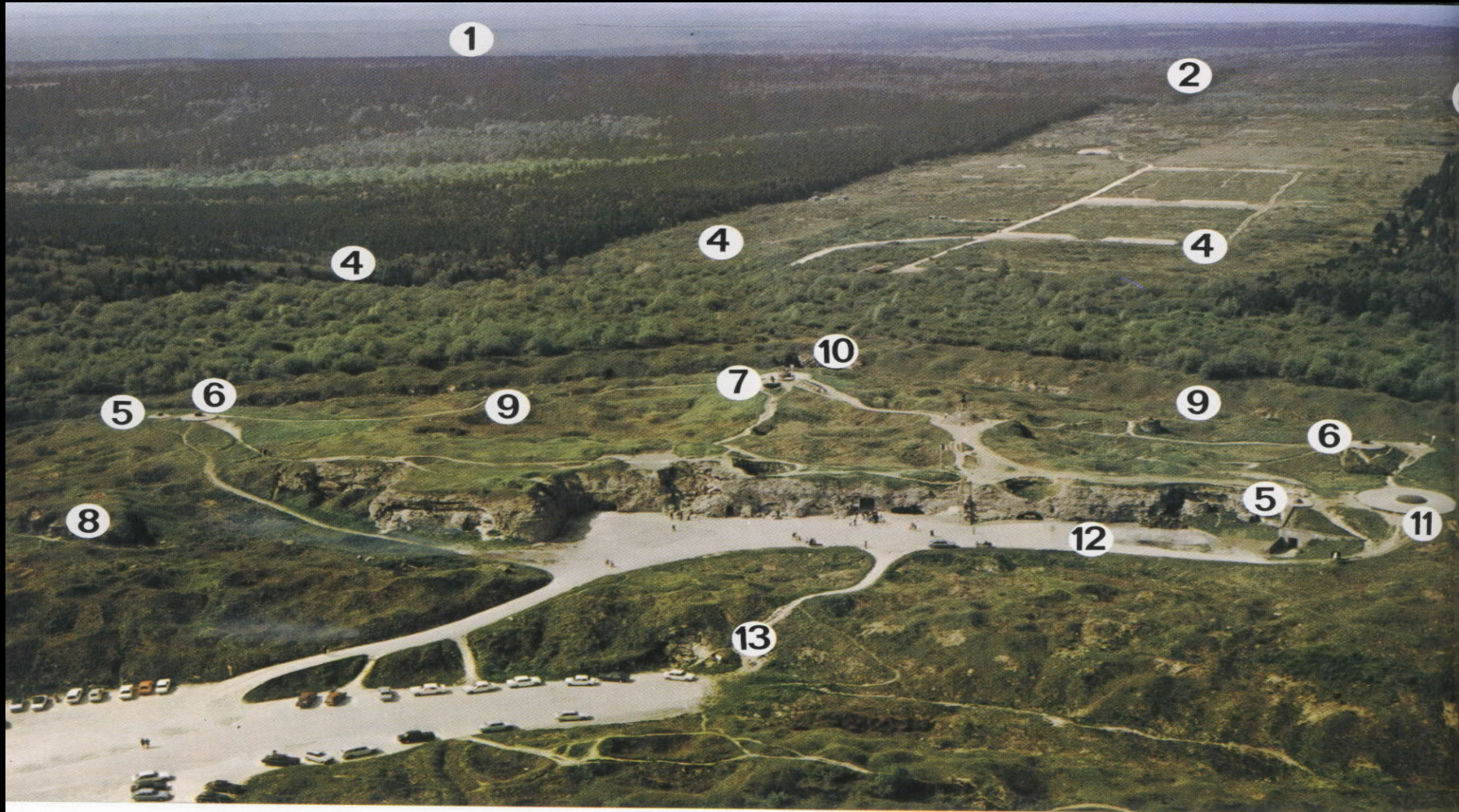


Fort Douaumont

AERIAL OF FORT DOUAUMONT



AERIAL DOUAUMONT TODAY



Aerial view of Douaumont Fort, and the zone of the German attack of the 21st-25th February 1916.

(1) Caures wood. (2) Herbebois. (3) La Wavrille. (4) The German attack. (5) Observation posts. (6) Machine-gun turret. (7) 75 mm. turret. (8) Bourges casemate. (9) Moat. (10) Double counter-escarpment casing. (11) 155 mm. turret. (12) Interior courtyard. (13) Normal entrance.

Zigzags in an interior gallery.

Aerial photograph taken directly over the Fort.

Bourges casemate.

FORT DOUAUMONT COURTYARD



DOUAUMONT COURTYARD TODAY



DOUAUMONT INTERIOR



DOUAUMONT BARRACKS



FORT DOUAUMONT TODAY



OBSERVATION AND MACHINE GUN TURRET



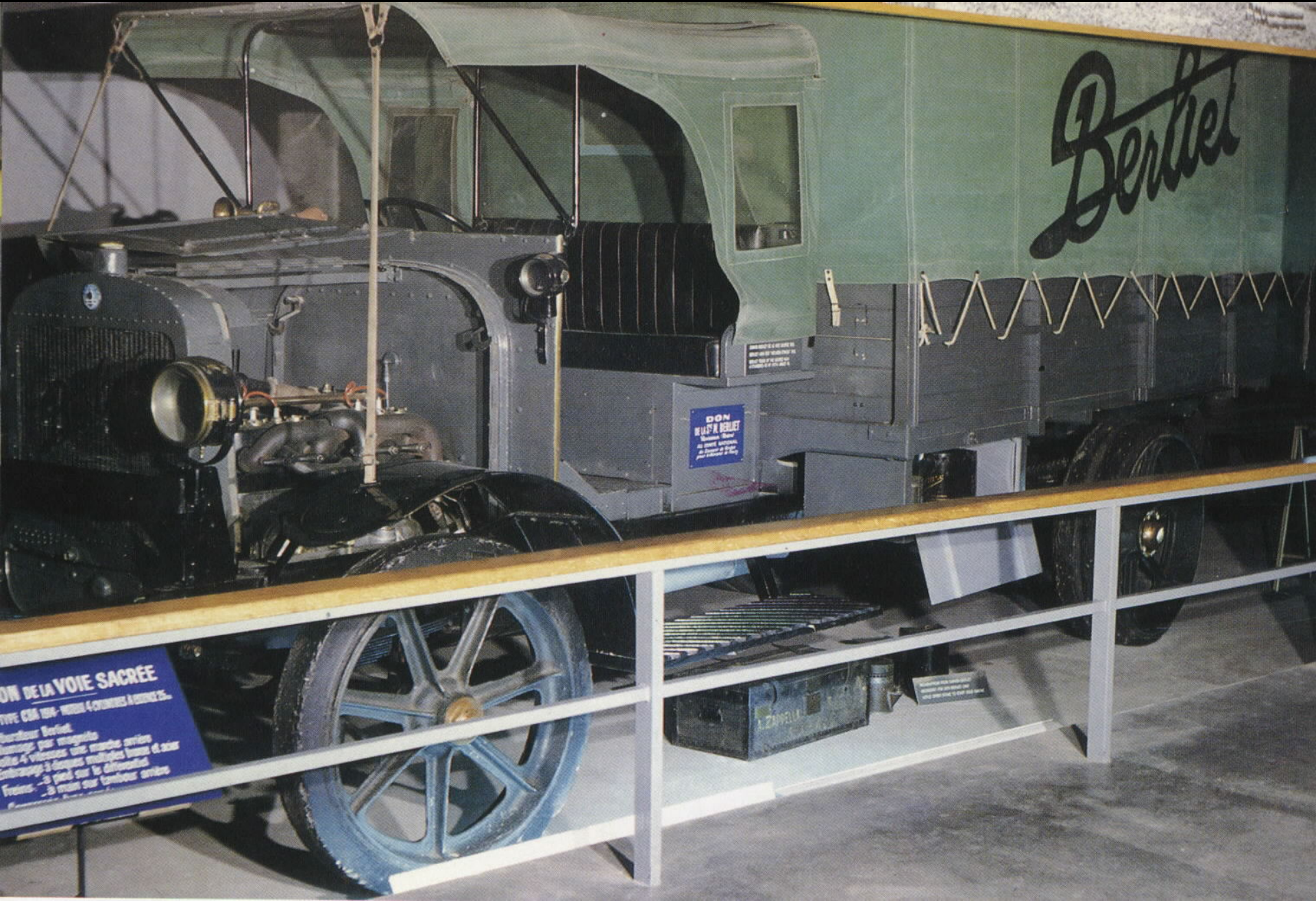
155MM GUN TURRET



LA VOIE SACREEE



SURVIVING TRUCK



ON DE LA VOIE SACRÉE
TYPE GM 194-1940 4 CYLINDRES A CATERPILLAR.

Le constructeur Berliet.
Le moteur par magnéto
Le volant à visserie une marche arrière
Le frein à disque à double commande et sur
le différentiel.
Le volant à visserie une marche arrière
Le frein à disque à double commande et sur
le différentiel.
Le volant à visserie une marche arrière

DON
DE L'ÉTAT BERLIET
Moteur "Berliet"
AN 1940-1940
Moteur à visserie
pour camion de 1940

A. ZAVELLA

VERDUN THEN



VERDUN TODAY



VERDUN TODAY



VERDUN TODAY



VERDUN TODAY



VERDUN TODAY



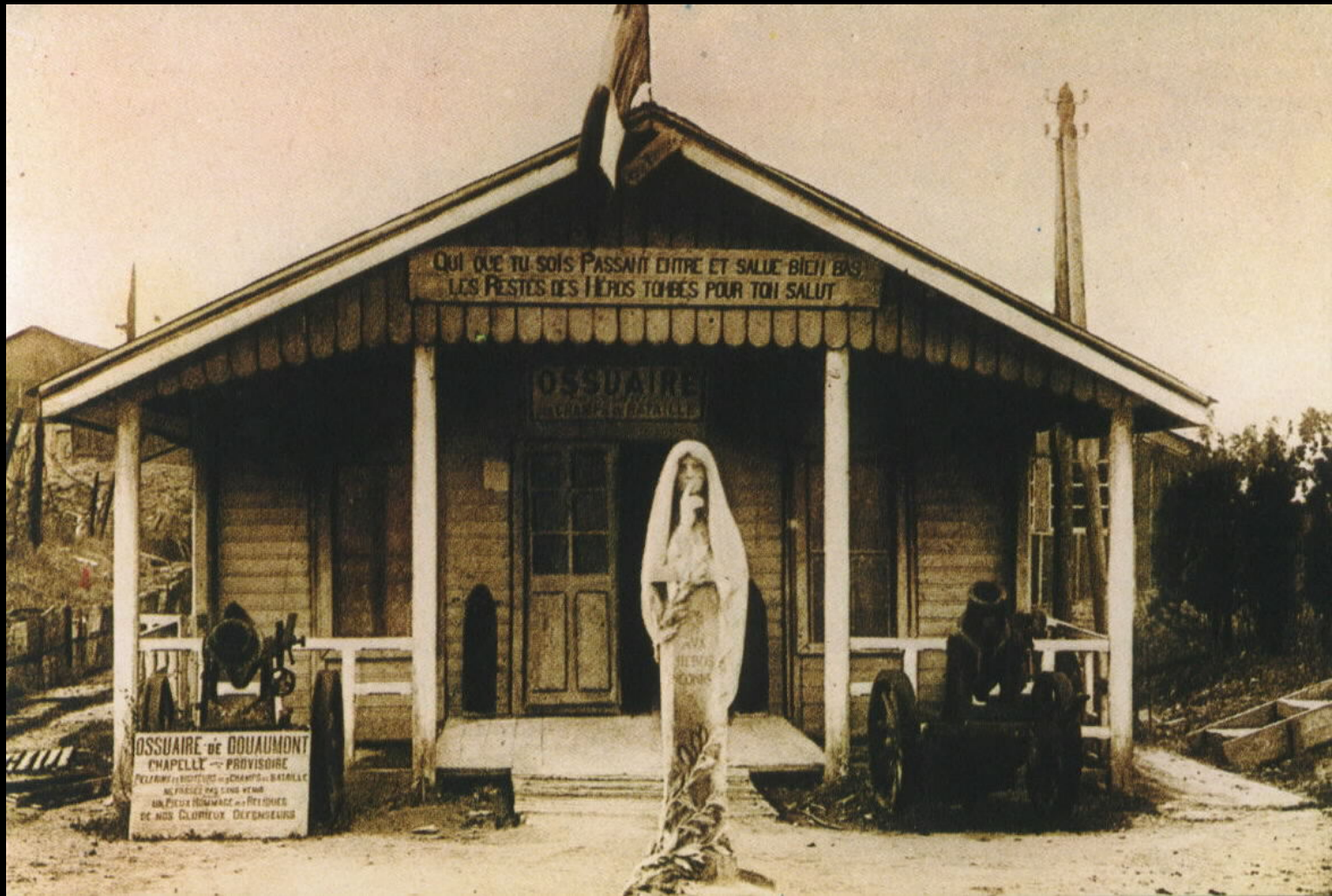
VERDUN TODAY



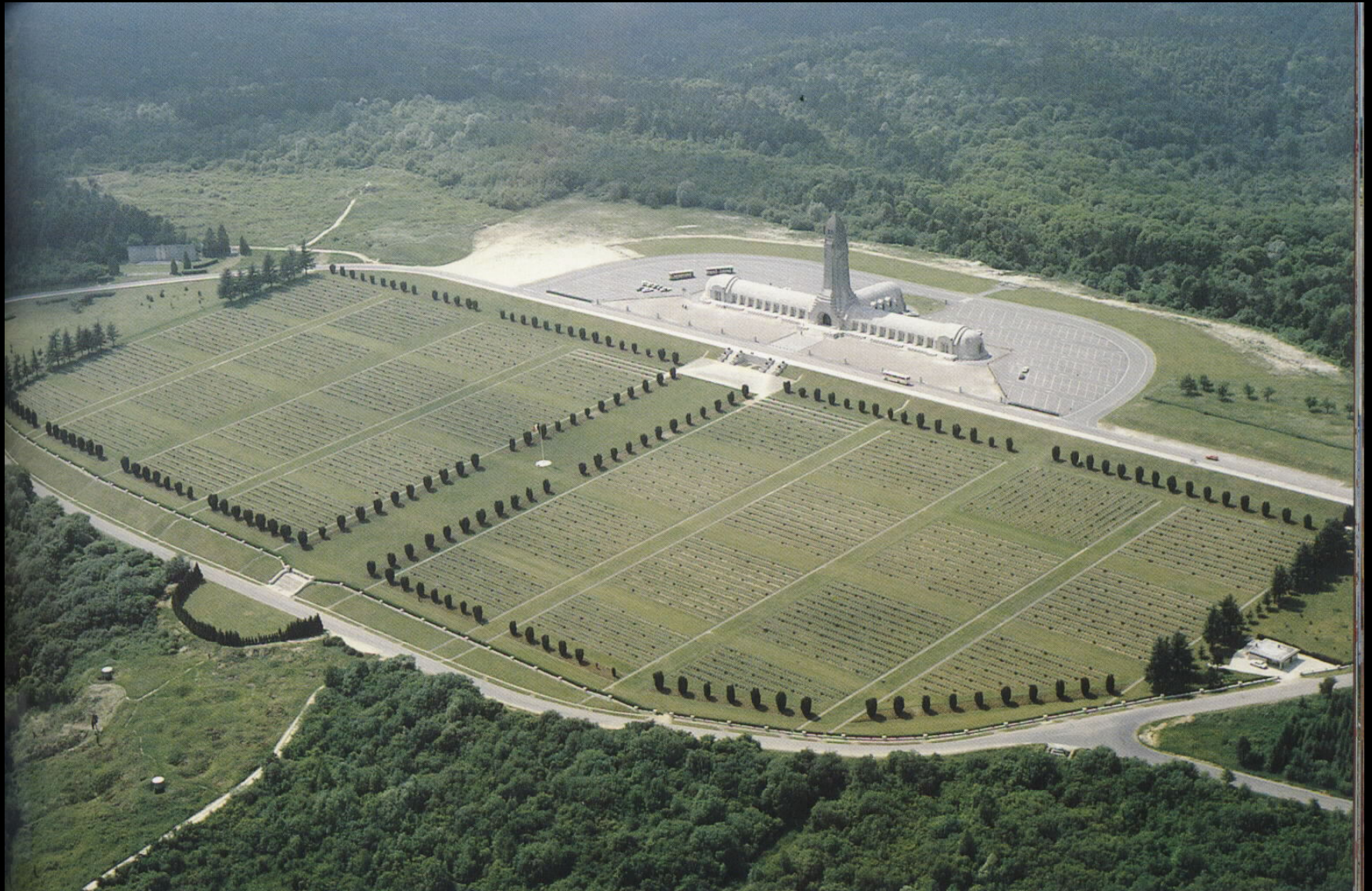
THE UNIDENTIFIED REMAINS



THE FIRST OSSUARY 1919



OSSUARY(1932) TODAY



OSSUARY TODAY



ENTRANCE TO 18 ALCOVES 137M LONG



OSSUARY ALCOVE CONTAINING 14 CUBIC METERS OF REMAINS



OSSUARY VAULT END 150 CUBIC METERS OF REMAINS



BATTLE OF VERDUN

FEB.21-DEC. 18 1916

- Germany
- 434,000 KIA/MIA
- France
- 542,000 KIA/MIA